



Leaders in Early Education and Care
From Babies to Kindergarten and Preschool

ENROL NOW

1800 517 028

pelicanschildcare.com



Contents

Our Philosophy.....	4
Why you'll love Pelicans	5
Your child's learning journey	6
Kindergarten and Preschool.....	9
The Child Care Subsidy.....	10
We support busy families	17
How we help settle your child into care	18
Xplor Home.....	19

Our Philosophy

At Pelicans, we provide a fun and nurturing 'second home' for your children, where they enjoy first class facilities, an exciting and progressive early learning curriculum and a loving environment.

We provide busy families with a premium service that encompasses high quality care, as well as qualified and experienced educators for children from six weeks to six years.





Why you'll love Pelicans

At Pelicans you'll feel confident knowing your child is engaged in a nurturing environment, participating in innovative education programs that prepare them for a smooth transition to primary school.



Experienced team of educators engaging your child in learning from Nursery through to Kindergarten/Preschool



Year-round program offering 9 hr, 10 hr and full day sessions to optimise Child Care Subsidy entitlements for busy families



Spacious outdoor areas promoting exploration with peers and the natural environment



Nutritious and delicious meals daily



Enhanced Learning Program for Kindergarten and Preschool in addition to the government-approved program available in your state



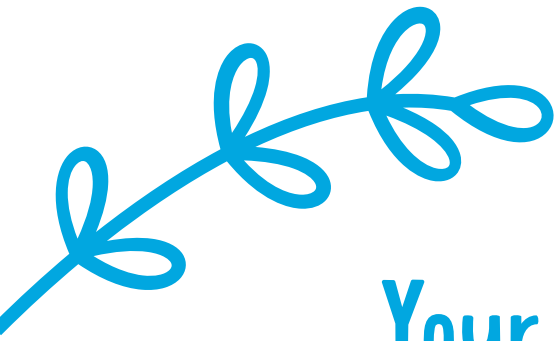
School readiness focus beyond numeracy, literacy, and oral language, to foster independence, confidence and resilience



Innovative Rhythm and Resilience program (RAMSR) designed to enhance your child's emotional regulation, memory and more



Open communication channels between centre and your family through our app, face to face discussions, written observations and more



Your child's learning journey

Starting out

Our educators are passionate about understanding the individual needs of children in our care. They'll partner with you to learn your child's routine, interests and requirements to make the transition into early learning a smooth one for you and your family.

Nursery

We pride ourselves on providing a welcoming, age-appropriate, stimulating nursery environment where each child feels safe to explore and discover.

Babies and infants learn and develop through play-based explorations using their senses in specifically designed indoor and outdoor learning environments.

Toddler

Play-based approaches are at the core of our toddler program, through learning experiences such as engaging in dramatic play, early reading experiences, problem solving, giving and following directions and group play.

Preschool and Kindergarten

Our Enhanced Learning Program for Kindergarten and Preschool goes beyond core curriculum areas of numeracy, literacy and oral language, to utilising innovative, evidence-based programs that support every child's self-regulation, confidence and resilience.

While preparing them for their first day of school, we're also setting them up with the skills and understanding they need to confidently find their place in the world as they grow.





Our Government-Approved Kindergarten and Preschool Program

Pelicans offers a year-round Kindergarten and Preschool program delivered by our bachelor qualified early childhood teachers. You can expect big things for your child with our focus on encouraging new connections and friendships, while also advancing their early language, literacy, numeracy, problem-solving and social skills.

Even better, we offer an Enhanced Learning Program for Kindergarten and Preschool that is tailored to accommodate your child's individual learning and development needs, helping to ensure a smooth transition to primary school.

The top 7 benefits of attending our Kindergarten and Preschool Program

Attending our high-quality Kindergarten or Preschool program will provide opportunities for your child to:



Grow in confidence, developing a positive view of themselves as a learner



Develop resilience and self-regulation through engaging in activities that challenge them



Use language effectively to communicate ideas, feelings and needs



Develop literacy skills, creatively expressing ideas and feelings through art, music, story-telling and dramatic play



Make friends and engage in group activities where they cooperate with their friends



Develop scientific and numeracy skills as they identify, explore, examine and question to solve problems



Learn to look after their belongings

The Child Care Subsidy: Our Easy Starter Guide

The Commonwealth Government Child Care Subsidy (CCS) is a Services Australia payment that helps make the cost of high-quality early education and care more affordable for Australian families. Understanding CCS and how it applies to your circumstances may be tricky to navigate. We're here to help you understand CCS and make the most of your entitlements.

Our centre teams and Family Support Team are also available to guide you, along with providing options for optimising your subsidy.

Am I eligible for the subsidy?

You may be eligible if:

- You or your partner care for the child a minimum of two nights per fortnight
- You or your partner are responsible for child care fees
- The child meets immunisation requirements
- You use an approved child care service – like us!

How do I apply?

The best way to apply for CCS is through your MyGov Account that is linked to Centrelink. The CCS works on four factors:

- **Your total combined family income**
- **The number of children you have in care**
- **The service type.** This can be long day care, or outside-hours care such as vacation care
- **How much 'work-related' activity you and your partner undertake each fortnight.** This includes paid work, volunteering, study and other activities as determined by servicesaustralia.gov.au

Job hunting, studying, starting a new business and volunteering are all eligible activities that will allow you to claim subsidised hours of care.



Government Activity Test

Types of approved activity



Paid work,
including leave



Volunteering



Studying
(approved course)



Time taken to
travel between
the child care
service and
your place of
work, training,
study, or other
approved
activity
will also be
included.



Self-employed
work



Working for free
(in the family business)



Actively job
seeking

**Hours of activity
per fortnight** = **Hours of subsidised care,
per child, per fortnight**

**Less than
8 hours**

0 hours if you earn
above \$83,820

24 hours if you earn
\$83,280 or below

36 hours – Aboriginal and/
or Torres Strait Islander child,
regardless of family activity

8 to 16 hours

36 hours

16 to 48 hours

72 hours

More than 48

100 hours



**You may be able to access
up to 36 hours of subsidised
care per fortnight for a child if
either of these apply:**

- your child is attending an early education program in a Centre Based Day Care
- your child is an Aboriginal or Torres Strait Islander child.

How much am I entitled to?

Visit www.pelicanschildcare.com/subsidycalculator and find our easy-to-use calculator to work out what you may be entitled to.*

You can also visit www.pelicanschildcare.com/child-care-subsidy-ccs for more subsidy information, or contact us on 1800 517 028 to help you work it out!

**Results are an estimate only.*

Helping work out your out-of-pocket cost

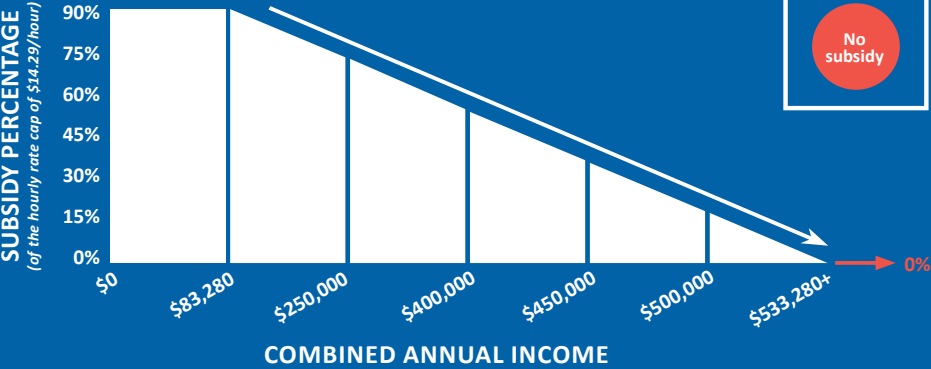
It's great to know what your early education and care centre charges for a day, but what you really need to know - for family finance purposes - is what you'll need to pay out of pocket.

The subsidy you will receive and any applicable cap will depend upon your own personal circumstances and is subject to your combined family income, hours of recognised activity and child care details. Even if you are currently receiving Child Care Subsidy, you will need to update your details through your Centrelink account on MyGov. For more information visit The Department of Education's website at education.gov.au/childcare.



Here's how much you can expect to get covered, on average.

Subsidy by combined annual income



**Based on eldest or only child. Families with more than one child in care may be eligible for a higher subsidy for their second child and younger children.*

**The \$14.29 hourly cap applied above is a 2024/2025 FY figure.*



Complying Written Agreement (CWA)

If you require a change to your booking patterns due to an addition or reduction of days, a change in session times, or if there is a change to our fee, your Complying Written Agreement (CWA) will be updated by our Centre and an updated CWA will be issued via our Child Care Management Software (Xplor) to be agreed to by the Primary Carer (parent CCS is linked to). This is a legal requirement under Family Assistance Legislation.

If your family is ineligible for Child Care Subsidy (CCS), our centre will create a Relevant Arrangement.

Families can view their current CWA on both the Xplor Home App and on the Xplor website once enrolled with a G8 centre.

NEED TO COMMENCE CARE?

We are committed to ensuring your children thrive through learning for life.

If you are a new family looking to find out more about how to enrol and learn more about your possible entitlements, please contact our Family Support Team on 1800 517 028.

Further information about CCS can also be found on the Services Australia website at www.servicessaustralia.gov.au/child-care-subsidy.









We support busy families

If you work, study or need additional flexibility in your day, you'll be pleased to know our Centres offer 9, 10, 11 or full-day sessions with nutritionally balanced meals served throughout.

Most centres offer extended opening hours, Monday through to Friday, and are open year-round including during school holidays (excluding public holidays).



How we help settle your child into care

Transitioning into a new education and care environment can be exciting and enjoyable for both children and families, yet can also bring moments of worry; and building relationships with educators and adapting to a new environment can take some time.

However, prior to your child's first day, our educators will work in collaboration with you to learn as much as possible about your child and their routine. This includes understanding who is in their family, their interests, sleep times, eating habits, and further information so we can extend your home environment into our early education and care centre to make it a seamless transition for your child.

Stay and Play

Our Stay and Play Programs are a great opportunity for families and children to get a better feel for our centre, team, and routines. Think of our Stay and Play program as a chance to learn first-hand about our centre, by spending time with the teachers and educators who will be nurturing and educating your child.

We're here to help

While many children will embrace their new environment with eagerness and enthusiasm, some might be more apprehensive.

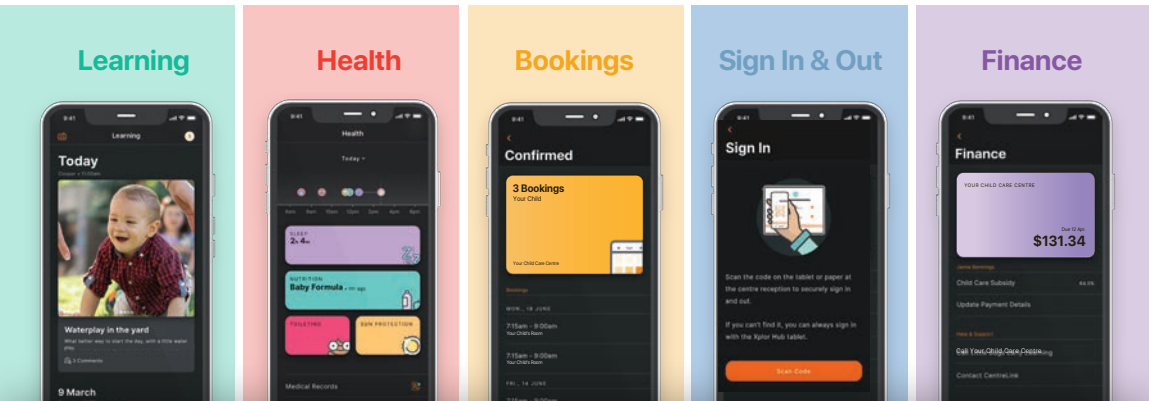
We encourage families to contact our team at any time during the day with any questions or updates you may need.

As your child begins to feel more confident and comfortable in their new environment, a confident drop-off routine will soon emerge.

We look forward to welcoming you and your family into our centre.

The benefits of becoming a Pelicans family

Xplor Home – Our parent app



Features and benefits at your fingertips

- Easy sign in and out with QR codes
- Your child's own health timeline
- Simple mobile bookings
- Your child's own learning timeline
- Customised notifications
- Manage Account Payment
- Access financial statements on your device
- Emergency contact and guardian management



**Download the
app today!**



Enrol your child at Pelicans today

Our Family Support Team will follow up with you shortly to discuss your enrolment options at Pelicans.

If you have any further questions about our centre, contact our Family Support Team directly on

1800 517 028